

Twin Angle Shear Wave CDA



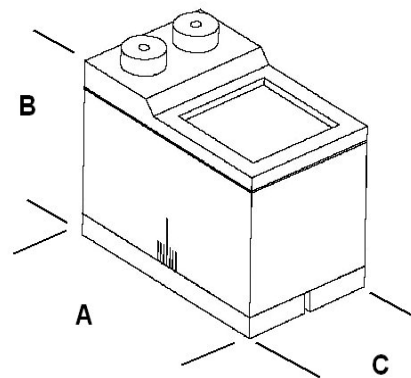
Features

- Dual angle beam shear wave contact probe.
- Rectangular, lead zirconate titanate crystal.
- Medium damped for medium bandwidth.
- Acrylic face.

Frequent Applications

- Castings
- Forgings
- Tube & Pipe
- Critical Welds
- General Welds

Transducer Models				
type	f	Θ	a × b	F
p/n	(MHz)	(°)	(mm)	(mm)
CDA2-45	2.1	45	10 × 5	22
CDA2-60	2.1	60	10 × 5	20
CDA2-70	2.1	70	10 × 5	19
CDA5-45	4.6	45	8 × 5	22
CDA5-60	4.6	60	8 × 5	21
CDA5-70	4.6	70	8 × 5	20



Size Options		Connector Options											
Probe Size (mm)	Case Dimensions (mm)			Connector Type						Connector Position			
	A	B	C	BNC (B)	Lemo 1 (L)	Lemo 00 (Z)	Microdot (D)	Subvis (S)	UHF (U)	Top (T)	Rear (R)	Side	Cable
10 × 5	27.0	19.0	16.0	-	-	•	•	•	-	•	-	-	-
8 × 5	27.0	19.0	16.0	-	-	•	•	•	-	•	-	-	-