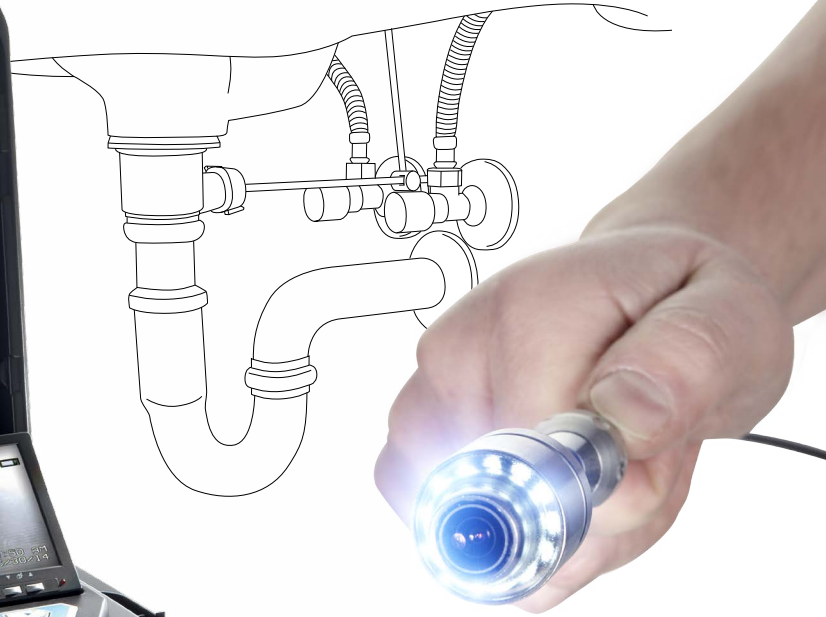


WÖHLER



CLEAR VIEW, WHEN SPACE IS TIGHT.

Wöhler VIS 250

VIDEO INSPECTION, POSITION INDICATOR AND LOCATOR

1" diameter

MINIATURE
COLOR
CAMERAHEAD

CAMERAHEAD
КОЛЕСИ
МИНИАТУРА

The Measure of Technology



Made in
Germany

WOHLER VIS 250

Intelligent camera head guides and tracks

Wohler's innovative VIS 250 service camera enables you to easily analyze damage in pipes of 1 1/2" dia and larger – and no power outlet required. Compact by design and powered by a rechargeable battery, this complete camera set is supplied in a plastic case. The camera head features a powerful, integrated light to allow you to precisely analyze damage in waste water pipes (at least 1 1/2" dia) and inspect downpipes as well as flue gas lines. Absolutely essential to analyze damage quickly!

In addition to competently analyzing hidden defects in all types of buildings, the Wohler VIS 250 provides you with transparent on-the-spot damage diagnostics.

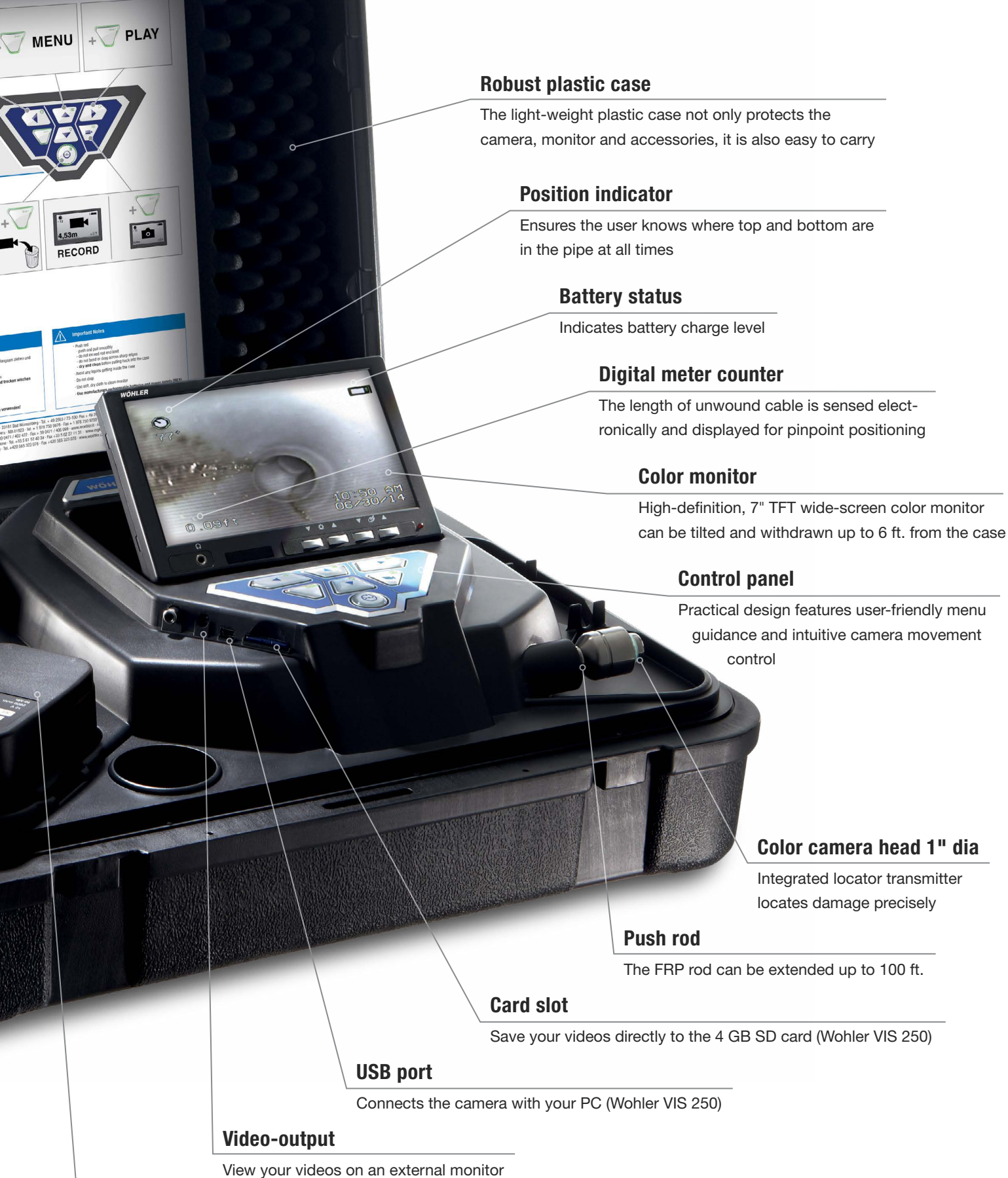
Thanks to its user-friendly handling and instant start-up characteristics, you not only ensure your customers are satisfied but you can also feel relaxed about meeting the challenges ahead. The integrated video memory allows you to fully document your inspection work.

The camera saves a video of the voyage of the camera head through the pipe. It passes even several 90° bends without problem. With a simple touch of a button a photo of a damaged spot can be made and stored.

We have brought the localization of the damage to perfection so that it is easy to estimate the cost for the repair. The distance to the camera head is indicated in the display as well as the position. This helps very much in run of ducts. The display always shows where the top and the bottom of the duct are. The user also sees the exact angular momentum in which the camera head is pushed upwards or downwards. With the new Wohler L 200 Locator it is even possible and economic to locate the camera head via radio.

- **Ideal for analyzing household waste water pipes of 1 1/2" dia and larger**
- **Flexible – the camera easily takes even several bends in stride**
- **Position of waterproof camera head indicated in the display**
- **Integrated locator transmitter precisely locates damage**
- **Up to 4 hours flexibility – storage space for 2 NiMH rechargeable batteries**
- **100 ft. FRP push rod**
- **Compact and safely stored for transport and mobility in a plastic case**





Robust plastic case

The light-weight plastic case not only protects the camera, monitor and accessories, it is also easy to carry

Position indicator

Ensures the user knows where top and bottom are in the pipe at all times

Battery status

Indicates battery charge level

Digital meter counter

The length of unwound cable is sensed electronically and displayed for pinpoint positioning

Color monitor

High-definition, 7" TFT wide-screen color monitor can be tilted and withdrawn up to 6 ft. from the case

Control panel

Practical design features user-friendly menu guidance and intuitive camera movement control

Color camera head 1" dia

Integrated locator transmitter locates damage precisely

Push rod

The FRP rod can be extended up to 100 ft.

Card slot

Save your videos directly to the 4 GB SD card (Wohler VIS 250)

USB port

Connects the camera with your PC (Wohler VIS 250)

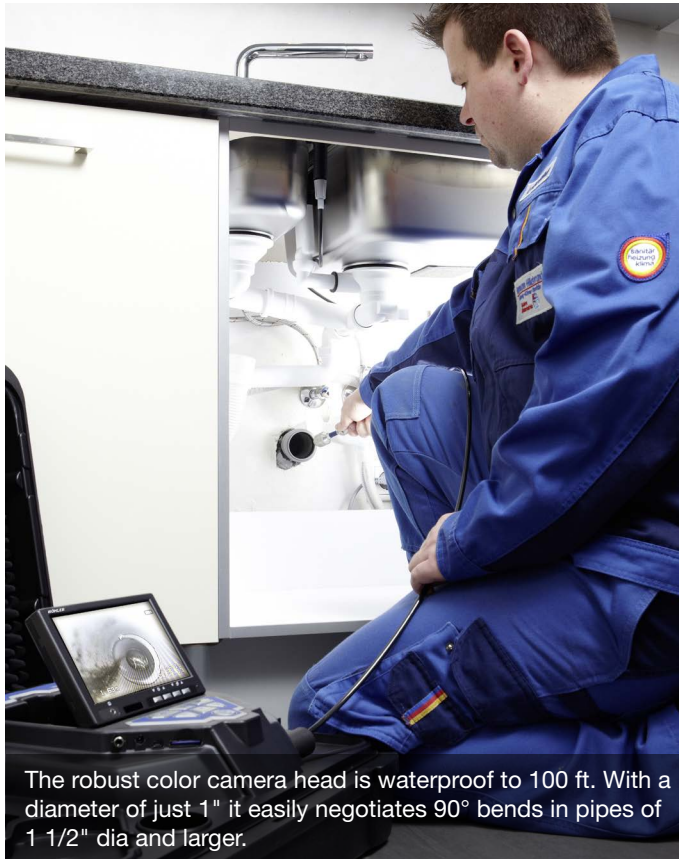
Video-output

View your videos on an external monitor

2 powerful rechargeable batteries

Space to store 2 rechargeable NiMH batteries (12 V) - each with a rechargeable, operating battery life of up to 2 hours – the main battery is charged in the case

Huge Range of Applications



The robust color camera head is waterproof to 100 ft. With a diameter of just 1" it easily negotiates 90° bends in pipes of 1 1/2" dia and larger.



The actual meter count and the position of the head are displayed in the monitor. The Wohler L 200 Locator makes it possible to locate the camera.



The service camera is an essential partner in a wide range of applications including the analysis of flue gas installations.



Wohler's new camera system is both compact and safely stored in a plastic case for transport and mobility.

WOHLER L 200 LOCATOR

Penetrating views through concrete and asphalt

Inspecting pipes under the ground, in ceilings and walls is daily routine for specialist tradesmen and women. And after the inspection, the next task is to locate the position of the damage accurately to be able to offer and carry out the necessary repair or cleaning work with precision. With the Wohler L 200 Locator that is now all just child's play. It precisely detects radio signals transmitted by the flexibly positionable camera head.

Skilled tradesmen and women and their customers are able to save considerable time and cost savings by utilizing video inspections to visualize leaks and document damaged or soiled sections of pipework. The Wohler L 200 Locator also locates the radio signals transmitted by the camera head of the Wohler VIS 250 / 200 systems. Damage is displayed precisely in a clear-cut graphic on the display of the Locator to ensure it is discovered rapidly and marked.

Insights keeping you in the picture

This is how the Wohler L 200 makes locating simple: The Locator attaches to a telescopic pole. Guided close to the ground,

along walls or below the ceiling, it locates the very long radio waves transmitted by the camera head. Particularly ideal: The user is guided by the bright color display throughout the locating process – cross-hairs are displayed on a horizontal grid system. In addition, an acoustic signal is emitted and made audible via a loudspeaker or headphones. The cross-hairs and the strength of the signal indicate the direction and distance to the located point. Once the section of pipe to be repaired or cleaned has been found, it can be marked easily. For this purpose, a holder is provided to affix a piece of chalk to the end of the Locator.

- **Locates radio signals transmitted by the camera head – rapidly pinpoints damage**
- **Easy to handle – user guided via display throughout the locating process**
- **Bright, easy-to-read color display**
- **Telescopic pole – easily track down damage anywhere**
- **Chalk holder – for chalk to mark the position where damage is found**



Extensive Range of Functions

DOCUMENTATION / POSITION INDICATOR



The "Save function" (Wohler VIS 250) makes it possible to save and view what you see at the push of a button. The integrated position indicator (Wohler VIS 250) ensures you keep your sense of orientation in the pipe.

BRIGHT ILLUMINATION



Thanks to the excellent lighting system of the color camera head, the camera supplies razor sharp images of even the darkest corners of the section under inspection.

FLEXIBLE



The tiltable and removable TFT wide-screen color monitor provides brilliant images, which it is possible to document via video memory on the SD card, a laptop or video recorder.

INTEGRATED LOCATOR TRANSMITTER



The camera head of the Wohler VIS 250 / 200 is equipped with a transmitter as standard – that means the camera head can easily be located by the new Wohler L 200 Locator.

WIDE RANGE OF APPLICATIONS

Analyze damage and inspect:

- Waste water pipes of 1 1/2" dia and larger
- Ventilation lines of 1 1/2" dia and larger
- Inspect hollow spaces, e.g. in front-wall installations
- Flue gas lines up to approx. 6" dia

FUNCTIONALITY

- Waterproof, light-sensitive camera head with a diameter of just 1" easily takes bends in stride
- Store video footage on a 2 GB SD card (Wohler VIS 250)
- Digital Indication of the camera head
- Electronic metering displayed on monitor
- Fully equipped mobile solution in a robust, plastic case
- Does not require main power supply
- Bright TFT color monitor for razor-sharp images
- Tilttable and removable monitor
- Integrated video output for documentation purposes
- Battery operating time: 2 x 120 min. with 2 rechargeable batteries (optional)
- Data exchange via mini USB cable (Wohler VIS 250)

LOCATOR (OPTIONAL)

- Transmitter integrated in camera head makes it possible to precisely locate the camera head
- Facilitates targeted repairs to damaged pipelines
- Telescopic holder makes it possible to locate damage under floors or in ceilings
- Chalk holder with lithographic chalk ensures it is possible to mark located damage immediately
- Powerful rechargeable battery

DOCUMENTATION

Simply record and store photos and videos on a 2 GB SD card (Wohler VIS 250) for documentation and archiving purposes for you and your customers

TECHNICAL DATA

Monitor

Dimensions housing	7" x 4.5" x 1.3"
TFT-display	7" / 16:9 format
Video out	FBAS signal
Weight	1 lbs
Power supply	Space for 2 rechargeable batteries, each 12 V or via power pack
Battery operating time	Max. 2 rechargeable batteries, each 120 mins. = 4 h (battery status in display)

Miniature color camera head, 1" diameter

Type	1/3" COLOR CMOS
Resolution	420 lines
Pixels	768 x 576 (PAL), 656 x 492 (NTSC)
Light sensitivity	0.5 Lux
Lens	f = 0.09", F = 2.5
Viewing angle	115°
Light source	12 white LEDs
Degree of protection	Waterproof to IP 68
Dimensions	Ø 1" x 1.5"
Weight	0.5 lbs
Operation temperature	32...104 °F, RH 95 % MAX
Storage temperature	-4...122 °F, RH 95 % MAX
Transmitter frequency	8.9 kHz

Push rod

Length	100 ft.
Diameter	0.24"
Distance measurement	electronic meter counter

Plastic case

Dimensions	20" x 17" x 7" (l x w x h)
Weight	15 lbs

Locator receiver

Display	Graphic visualization of transmitted position
---------	---

Output impedance

Headphones	32 Ohm
Power supply	12 V NiMH battery (rechargeable)
Operating temperature	32...104 °F
Storage temperature	14...104 °F
Weight	1.3 lbs
Dimensions	13" x 6" x 3" (l x w x h)

Memory (Wohler VIS 250)

Recording	4 GB SD card (2.5 h recording capacity)
Interface	Mini USB port

SETS AND ACCESSORIES

Sets Wohler VIS 200	Qty
Wohler VIS 200 Video Inspection Camera Video inspection for sewer and water pipes, drain and flue lines, ductwork, etc. Comes with: Wohler TFT monitor 7" with 6 ft. connection cable (removable monitor), digital meter counter, Wohler camera head 1" dia V2, 100 ft. push rod 0.24" dia, anti-slide mat, 1 NiMH battery and charger, complete system in a plastic case, guidance sleeve, guidance ball	
P/N 6261	
Wohler VIS 200 Video Inspection Camera with Wohler L 200 Locator Video inspection for sewer and water pipes, drain and flue lines, ductwork, etc. Comes with: Wohler VIS 200 NTSC Service Camera with digital meter counter in heavy duty carrying case, miniature color camera head Ø 1" V2 NTSC, 7" TFT color monitor, 6 ft. connection cable (removable monitor), 100 ft. push rod Ø 0.24", anti-slide mat, 1 NiMH battery with charger, Wohler L 200 Locator (Receiver), 1 guidance sleeve for mini camera head, 1 guidance ball for flex part of camera push rod	
P/N 8937	

Sets Wohler VIS 250	Qty
Wohler VIS 250 Video Inspection Camera Video inspection for sewer and water pipes, drain and flue lines, ductwork, etc. Comes with: Wohler VIS 250 NTSC Service Camera with digital meter counter in heavy duty carrying case, miniature color camera head 1" dia V2 NTSC, 4 GB SD card and mini USB cable 7" TFT color monitor, 6 ft. connection cable (removable monitor) 100 ft. push rod 0.24" dia, anti-slide mat, 1 NiMH battery with charger, guidance sleeve, guidance ball	
P/N 6253	
Wohler VIS 250 Video Inspection Camera with Wohler L 200 Locator Video inspection for sewer and water pipes, drain and flue lines, ductwork, etc. Comes with: Wohler VIS 250 NTSC Service Camera with digital meter counter in heavy duty carrying case, miniature color camera head 1" dia V2 NTSC, 4 GB SD card and mini USB cable, 7" TFT color monitor, 6 ft. connection cable (removable monitor) 100 ft. push rod 0.24" dia, anti-slide mat, 1 NiMH battery with charger, Wohler L 200 Locator (Receiver), guidance sleeve, guidance ball	
P/N 8932	

Accessories	Qty
Wohler L 200 Locator (Receiver)	
P/N 7430	
Wohler VIS Cleaning Set with plastic case, for approx. 50 applications 1 liter disinfection spray, 50 cleaning tissues, 100 disposable gloves size XL (powder free), 6.76 ounce lubricant, plastic case	
P/N 4725	
Wohler VIS Cleaning Set Refill for approx. 50 applications 1 liter disinfection spray, 50 cleaning tissues, 100 disposable gloves size XL (powder free), 6.76 ounce lubricant, in plastic bag	
P/N 4726	

Accessories	Qty
Guidance Sleeve with protection cage for miniature camera head 1" dia improves ability to navigate through pipe bends, protects the camera head and the objective	
P/N 3847	
Wohler Camera Roller Guide suitable for camera heads and rods	
P/N 3681	
Guidance Ball for flex part of camera push rod improves ability to navigate through pipe bends	
P/N 3634	
Sunshade for Wohler VIS 2xx and VIS 3xx for 7" TFT monitor	
P/N 6814	
Guidance Sleeve for mini camera head	
P/N 3827	
Wohler VIS Centering Star for Wohler VIS 2000 ^{PRO} / VIS 400 / VIS 2xx 8" dia with 6 brushes, with thread, centers the GRP camera rod, to guide the camera head	
P/N 3854	
Wohler VIS Centering Brush for Wohler VIS 2000 ^{PRO} / VIS 400 / VIS 2xx / VIS 3xx	
P/N 3850	
Wohler Battery 12 V NiMH 2600 mAh for Wohler VIS 2xx / VIS 3xx operation time: 120 min, warranty: 12 months	
P/N 4715	
Power Supply for Wohler VIS 3xx / VIS 2xx 18V, 1.5A, 100-240V, 50 Hz, 2.1 mm female plug, center plus, charge time 3 hours for all countries	
P/N 3789	
Car charger Wohler VIS 2xx / 3xx 18 V	
P/N 3169	

WÖHLER

Wohler USA Inc.
 5 Hutchinson Drive · Danvers, MA 01923
PHONE: (+1) 978 750 9876 · **FAX:** (+1) 978 750 9799
MAIL: info@wohlerusa.com · **WEB:** www.wohlerusa.com

